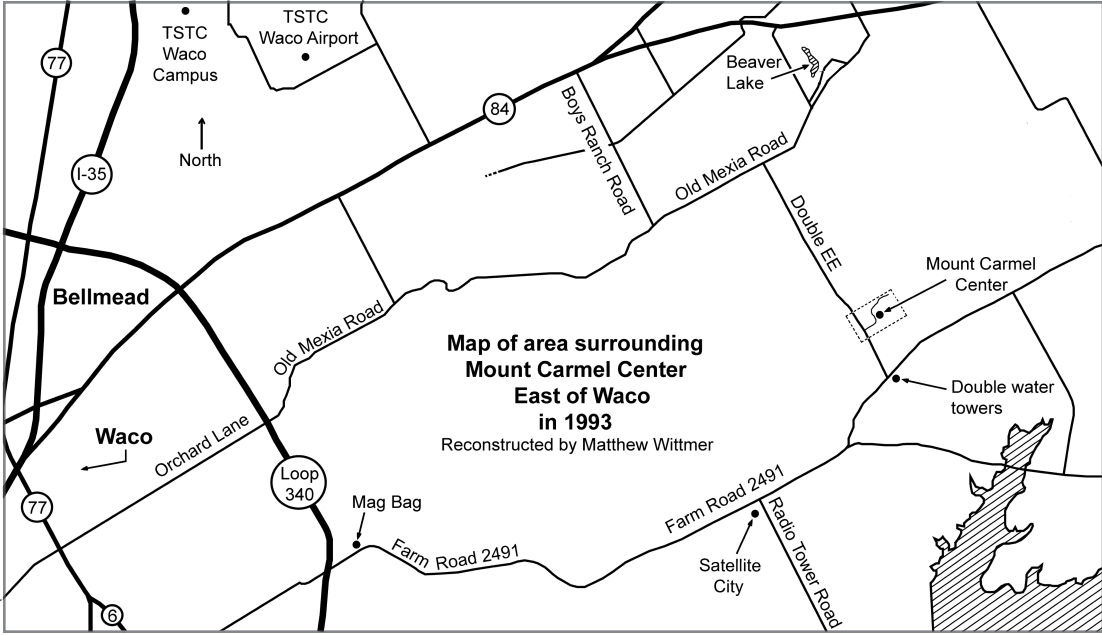
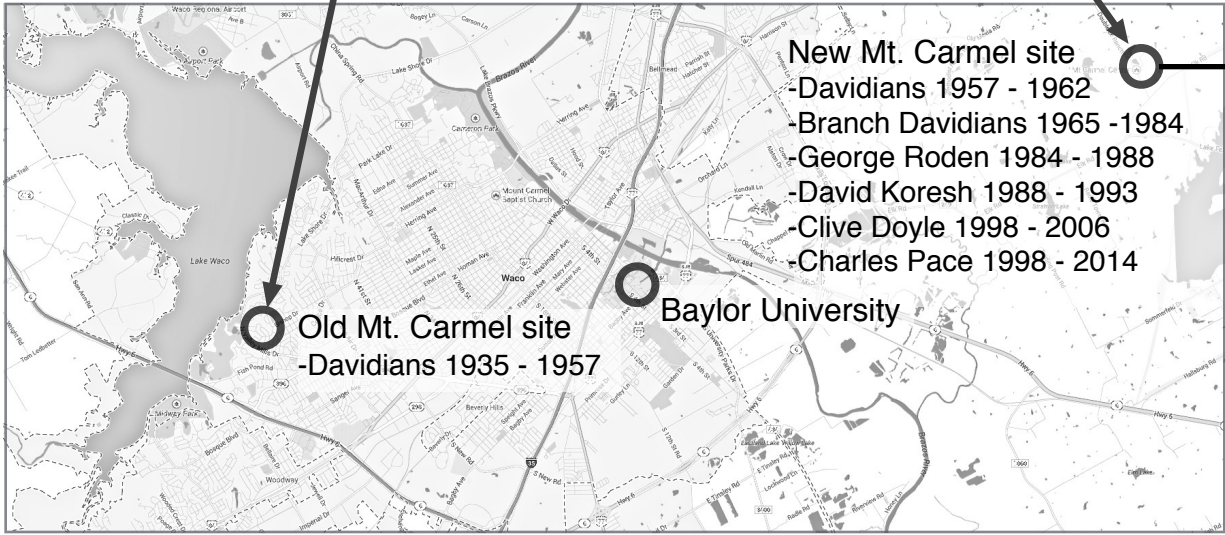
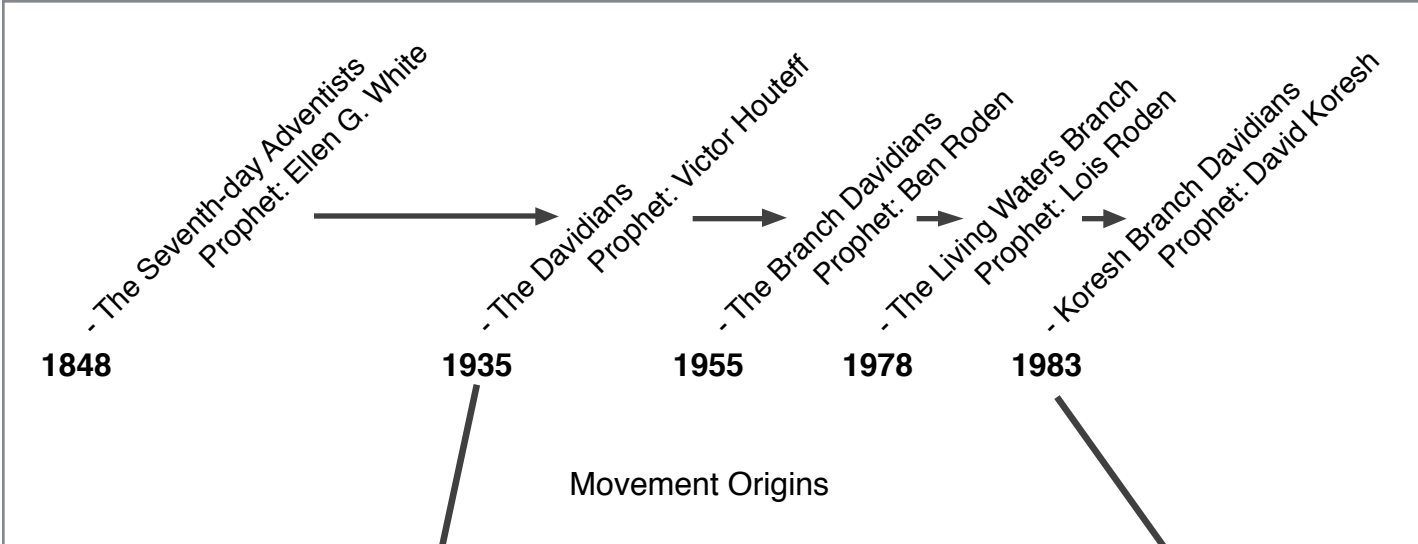


The 2014 International CESNUR Annual Conference
Baylor University
Waco, Texas
June 4 - 7, 2014

Mount Carmel Property Tour

Mount Carmel tour supplement & diagrams created by Matthew D. Wittmer.
For more information about the property see Wittmer's web site at:
< <http://stormbound.org> >



Mount Carmel Property History

1957 - 2014

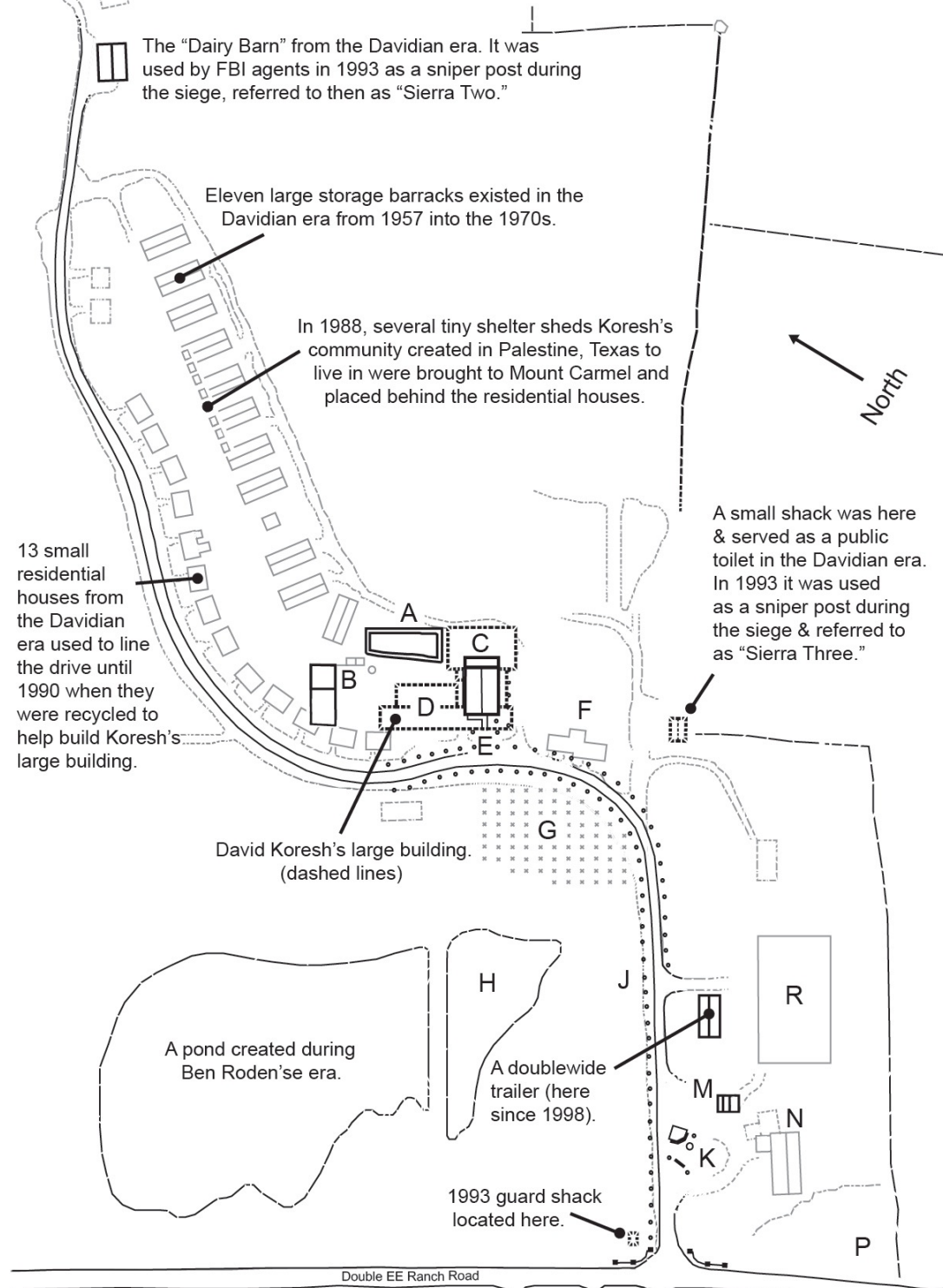
- Diagram Annotations -
Created by Matthew Wittmer

- A. Concrete swimming pool created in 1992. It remains there as of 2014. Charles Pace has been working to turn it into an aquaponic garden.
- B. Concrete remains of the underground storm shelter from 1993.
- C. Where David Koresh's gymnasium was in 1993.
- D. Where the residential rooms, cafeteria, and a four-story tower of Koresh's large building were located in 1993.
- E. The front walkway to both Koresh's large building and to the current chapel (built in 1999 - 2000). The current chapel is a bit larger than the Koresh chapel. Pace built a kitchen on the back of the new chapel between 2009 and 2010.
- F. Two houses were cobbled together here for and by Ben and Lois Roden during Ben Roden's era on the property between 1957 and the early 1980s.
- G. This is the original location of where the crape myrtle memorial trees were planted in 1995 by survivors and supporters for each Branch Davidian who was killed during the 51-day siege. Each tree had a memorial name stone at its base. Around 2005 Pace relocated the stones in two wall formations at the front gate where they remain as of 2014.
- H. This small pond was created when Koresh enlarged the pond that Ben Roden had created to the north. The excavated dirt from making the smaller pond was used to create the earthen wall you seen in the diagram that now splits the two bodies of water.
- J. This is the current location of the memorial crape myrtle trees as of 2014 (originally in front of the chapel in 1995; see G). The trees were replanted along the drive in 2009 by Pace.
- K. Where the memorial name stones are now stacked. Pace has also installed a large stone sign here entitled "The Branch," which greets visitors at the front gate.
- M. Clive Doyle built this small house to serve as a Visitor's Center Museum to share survivors' recollections of events. This museum was operational between 1998 and 2006. Doyle removed the materials on exhibit when he moved off the property in 2006.
- N. This was the location of the initial chapel on the property during Florence Houteff's ministry in 1957 when the property was acquired.
- P. This is the location of the cemetery at Mount Carmel, originally named "Green Acres Cemetery" as Double EE Ranch Road used to be named Green Acres Road (the cemetery was named after the road). Name markers in this cemetery are mostly missing now but I have archived photos of the previous name markers at < <http://stormbound.org/waco.html> >. At least eleven people have been buried here.
- R. A pole barn was built here in the late 1950s for the Davidians when they gathered at Mount Carmel in April 1959 in expectation of God's violent chastisement of Seventh-day Adventists and the miraculous transportation of Davidians to Jerusalem.

Mount Carmel Property History

1957 - 2014

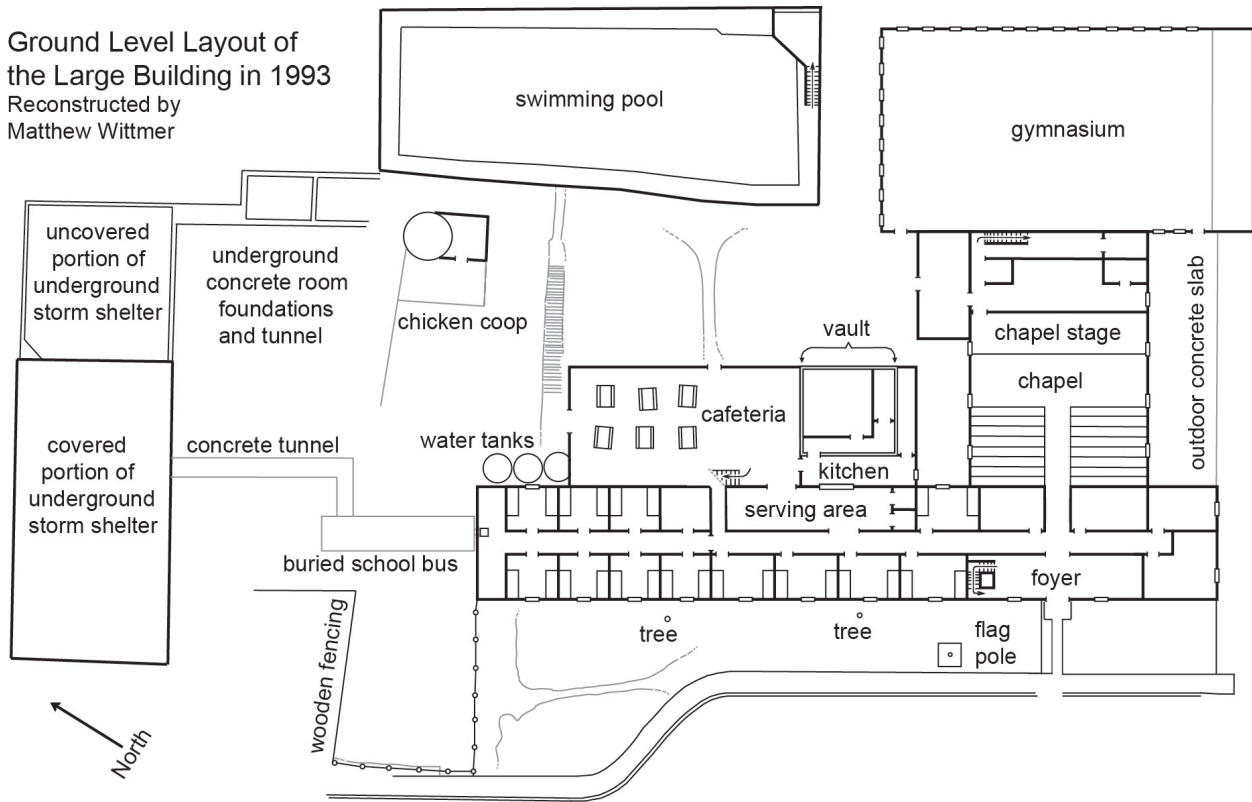
Created by Matthew Wittmer



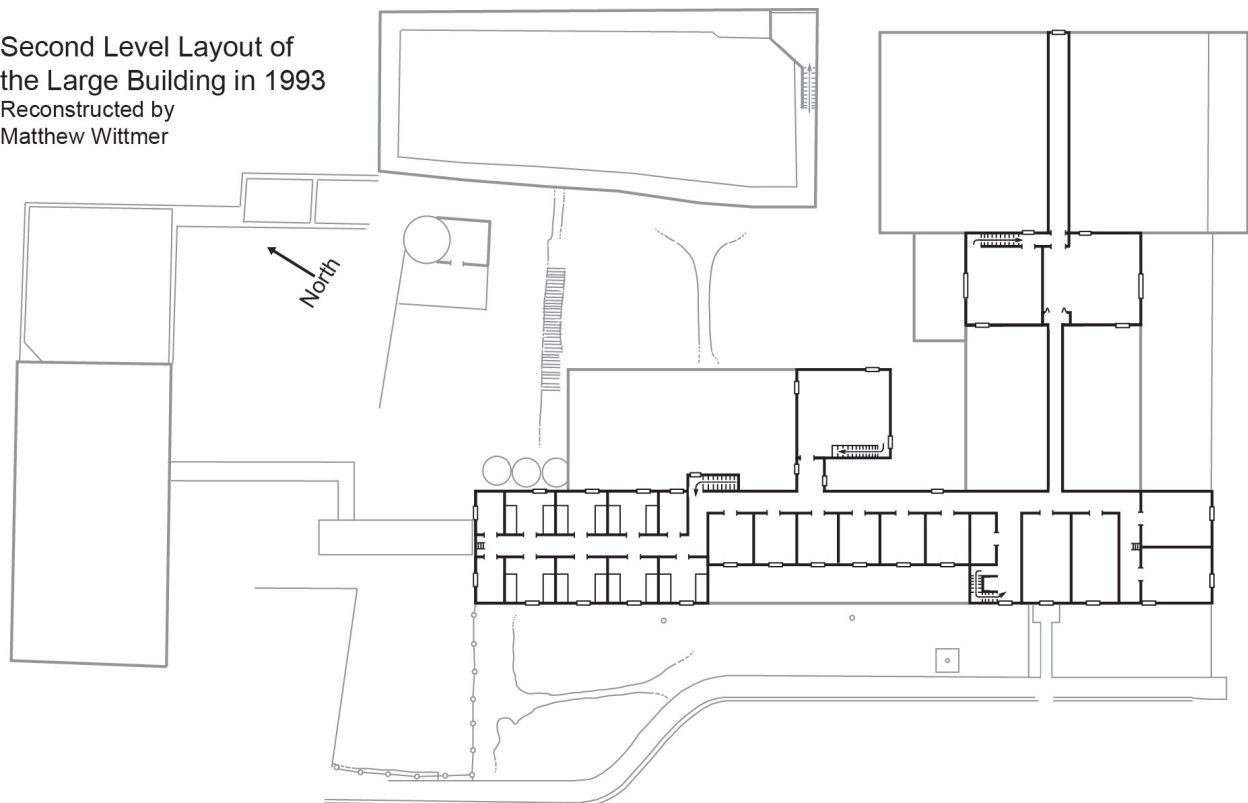
- Black lines.....Present day structures
- Dashed bold lines.....Koresh-era buildings, now gone
- Grey lines.....Former buildings, from the Davidian era, now gone

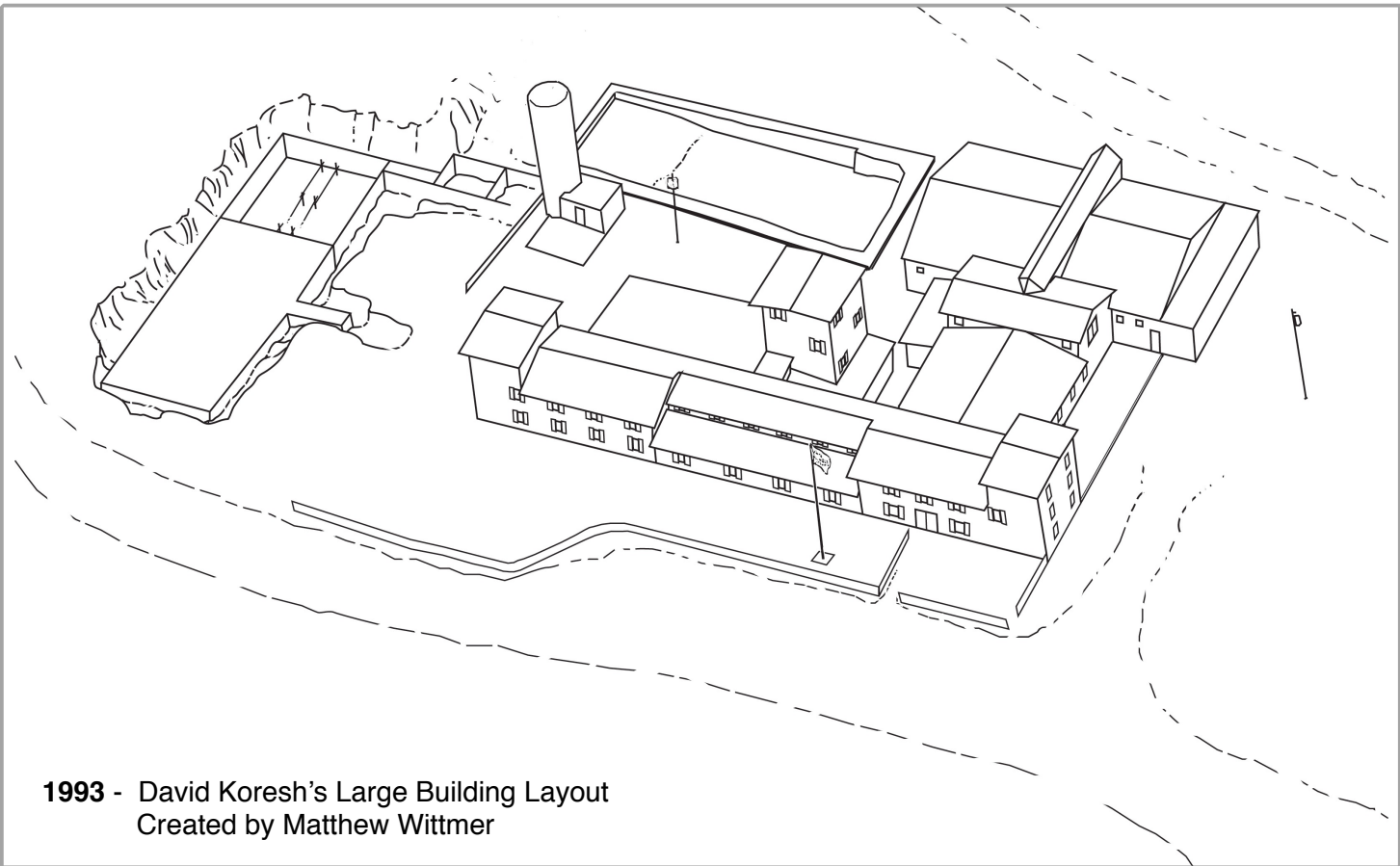
A house once used by Davidian Florence Houteff. The ATF occupied it in early 1993 prior to the Feb. 28th raid. The FBI then used it as a sniper post during the siege, and referred to it as "Sierra One." The house was demolished in 2004.

Ground Level Layout of
the Large Building in 1993
Reconstructed by
Matthew Wittmer

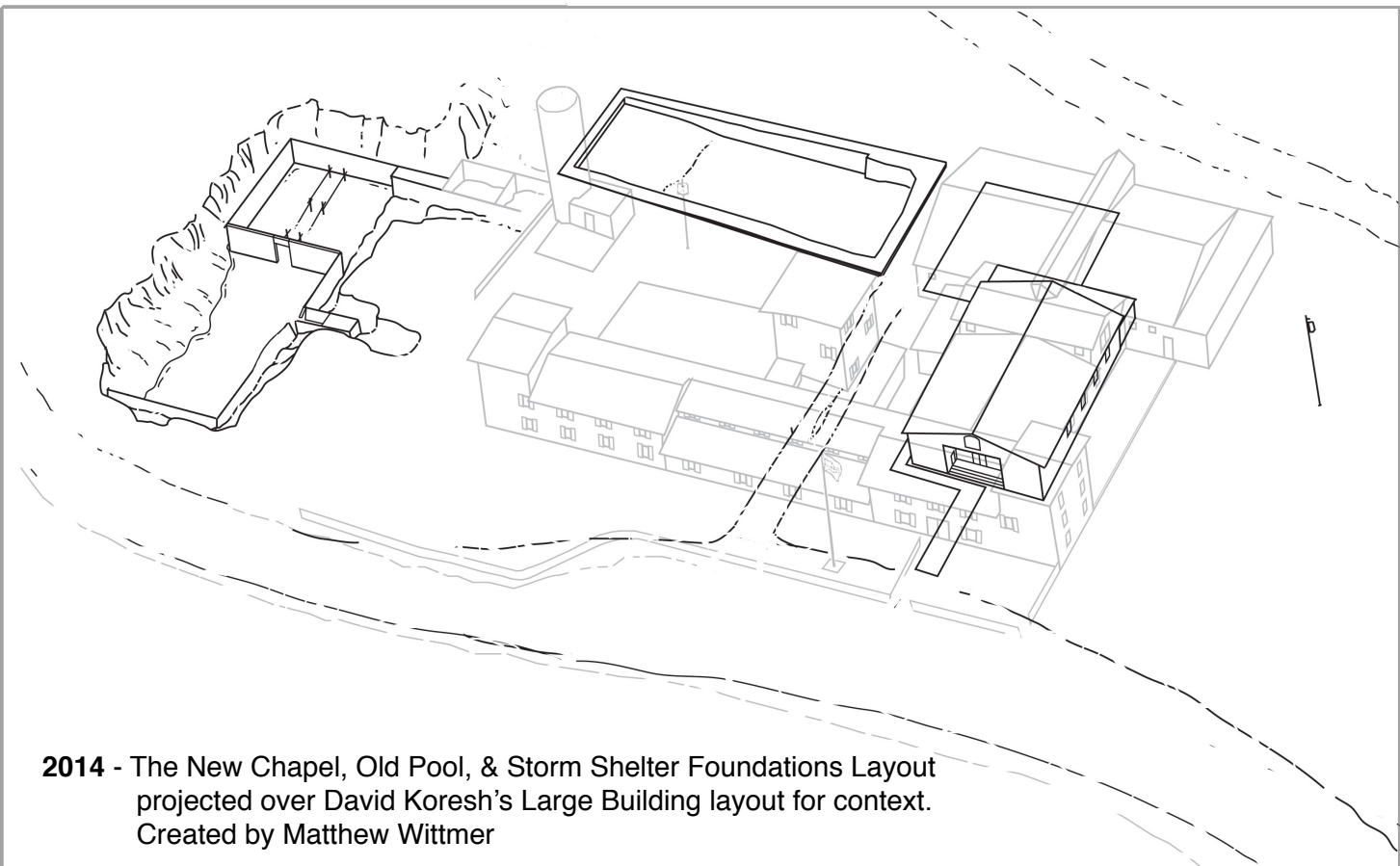


Second Level Layout of
the Large Building in 1993
Reconstructed by
Matthew Wittmer





1993 - David Koresh's Large Building Layout
Created by Matthew Wittmer



2014 - The New Chapel, Old Pool, & Storm Shelter Foundations Layout
projected over David Koresh's Large Building layout for context.
Created by Matthew Wittmer